

University of Texas Rio Grande Valley

ScholarWorks @ UTRGV

Health and Biomedical Sciences Faculty
Publications and Presentations

College of Health Professions

4-4-2016

Evidence of relictual introgression or incomplete lineage sorting in nrDNA of *Juniperus excelsa* and *J. polycarpos* in Asia Minor

Robert P. Adams
Baylor University

Metin Armagan

Adam Boratynski

Bouchra Douaihy

Magda Dou Dagher-Kharrat

See next page for additional authors

Follow this and additional works at: https://scholarworks.utrgv.edu/hbs_fac



Part of the [Plant Sciences Commons](#)

Recommended Citation

Adams, R., Armağan, M., Boratyński, A., Douaihy, B., Dagher-Kharrat, M. D., Farzaliyev, V., Gucel, S., Mataraci, T., Tashev, A., & Schwarzbach, A. E. (2016). Evidence of relictual introgression or incomplete lineage sorting in nrDNA of *Juniperus excelsa* and *J. polycarpos* in Asia Minor. *Phytologia*, 98(2), 146–155.

This Article is brought to you for free and open access by the College of Health Professions at ScholarWorks @ UTRGV. It has been accepted for inclusion in Health and Biomedical Sciences Faculty Publications and Presentations by an authorized administrator of ScholarWorks @ UTRGV. For more information, please contact justin.white@utrgv.edu, william.flores01@utrgv.edu.

Authors

Robert P. Adams, Metin Armagan, Adam Boratynski, Bouchra Douaihy, Magda Dou Dagher-Kharrat, Vahid Farzaliyev, Salih Gucl, Tuğrul Mataraci, and Andrea E. Schwarzbach

Evidence of relictual introgression or incomplete lineage sorting in nrDNA of *Juniperus excelsa* and *J. polycarpos* in Asia Minor

Robert P. Adams

Biology Department, Baylor University, Box 97388, Waco, TX 76798, Robert_Adams@baylor.edu

Metin Armagan

Yüzüncü Yıl Üniversitesi, Eğitim Fakültesi B Blok Kampüs, Van, Turkey

Adam Boratynski*

Institute of Dendrology, Polish Academy of Sciences, Parkowa 5, 62-035, Kornik, Poland

Bouchra Douaihy

Department of Life and Earth Sciences, Faculty of Sciences, Lebanese University, Tripoli, Lebanon

Magda Dou Dagher-Kharrat

Laboratoire Caractérisation Genomique des Plantes, Université Saint-Joseph, Campus Sciences et Technologies, Mar Roukos, Mkalles, BP 1514, Riad el Solh, Beirut 1107 2050, Lebanon

Vahid Farzaliyev

Central Botanical Garden, Azerbaijan National Academy of Science,
Badamdar shosse 40, Baku, Azerbaijan, AZ 1073.

Salih Gucel

Environmental Research Institute, Near East University, North Nicosia, Cyprus

Tuğrul Mataraci

Eskidji Müz. AŞ., Sanayi Cad. Vadi Sokak No:2, Yenibosna-Bahçelievler, İstanbul, Turkey

Alexander N. Tashev

University of Forestry, Dept. of Dendrology, 10, Kliment Ochridsky Blvd., 1756 Sofia, Bulgaria

and

Andrea E. Schwarzbach

Department of Health and Biomedical Sciences, University of Texas - Rio Grande Valley,
Brownsville, TX 78520, USA.

ABSTRACT

DNA analysis of *Juniperus excelsa* from throughout its range revealed that *J. polycarpos*, instead of *J. excelsa* occupies central and eastern Turkey. Based on nrDNA (ITS) data, it appears that relictual hybridization has occurred in southeastern Turkey between *J. polycarpos* and *J. turcomanica*. Surprisingly, evidence of incomplete lineage sorting or relictual hybridization between *J. polycarpos* and *J. seravschanica* was found in central Turkey and northwest Iran. Published on-line www.phytologia.org *Phytologia* 98(2): 146-155 (April 4, 2016*). ISSN 030319430 *digitally corrected-Adam Boratynski, and symbols added to Fig. 3, May, 10, 2016.

KEY WORDS: *Juniperus excelsa*, *J. polycarpos* var. *polycarpos*, *J. polycarpos* var. *turcomanica*, *J. seravschanica*, DNA sequencing, nrDNA, petN-psbM, trnS-trnG, trnD-trnT, trnL-trnF.

Recently, Adams et al. (2016) examined *J. excelsa* and putative *J. polycarpus* from the eastern Mediterranean, eastward into Azerbaijan. A Bayesian consensus tree shows *Juniperus seravschanica*, *J. polycarpus*, *J. p. var. turcomanica*, *J. procera* and *J. excelsa* in well-supported clades. *J. excelsa* samples, newly collected from Bulgaria, Cyprus, and sw Turkey, are in a clade with other *J. excelsa* (Fig. 1). There is some minor variation among the *J. excelsa* samples, mostly notably in the Afqa, Lebanon population as previously reported (Douaihy et al., 2011, 2013).

All of the *J. polycarpus* samples from Azerbaijan are closely related with *J. polycarpus*, Armenia along with the El Njass, Lebanon (*Adams 14161*) sample (Fig. 1). Three other El Njass samples (*Adams 14158*, *14158*, *14160*) appear to be intermediate between *J. polycarpus* and *J. p. var. turcomanica* (Fig. 1).

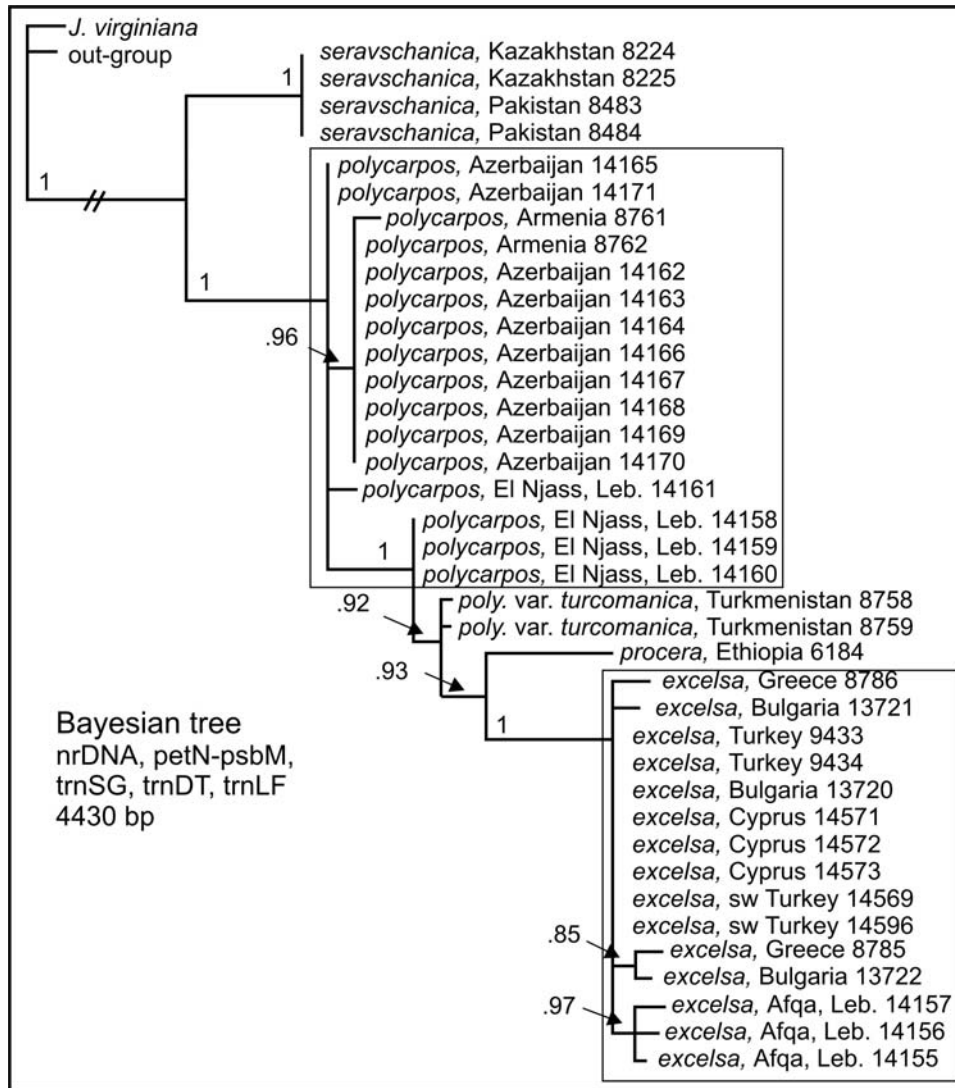


Figure 1. Bayesian analysis based on nrDNA, petN-psbM, trnSG, trnDT and trnLF. Numbers at the branch points are posterior probabilities.

Overlaying a minimum spanning network onto a distribution map gives one a perspective of the geographic trends (Fig. 2). The newly sampled *J. excelsa* populations from Bulgaria, Cyprus and sw

Turkey were identical or nearly identical to *J. excelsa* of Eskisehir, Turkey (Fig. 2). Both the Cyprus and southwestern Turkey populations of *J. excelsa* showed no differences (Fig. 2). The Bulgaria *J. excelsa* differed by none or one difference from Eskisehir, Turkey (Fig. 2).

As previously reported (Adams et al., 2014), the Afqa, Lebanon *J. excelsa* population differs by 2 MEs from Eskisehir, Turkey, which in turn, differs by only 1 ME from the Lemos, Greece population (Fig. 2). The other Lebanon populations that group with Afqa are probably *J. excelsa*.

However, the Wadi El Njass, Lebanon (2287 m) population, although near Afqa, grouped with *J. polycarpus* and differs by 1 to 3 MEs from *J. p. var. turcomanica*, Turkmenistan and by 1 to 2 MEs from *J. polycarpus*, Armenia (Fig. 2). The *J. excelsa*, Afqa population is only about 100 - 150 km from other *J. excelsa* populations (Fig. 2), but the Wadi El Njass, *J. polycarpus* population is 700 to 1000 km from the nearest *J. polycarpus* population, still, it differs by only 1 to 3 MEs.

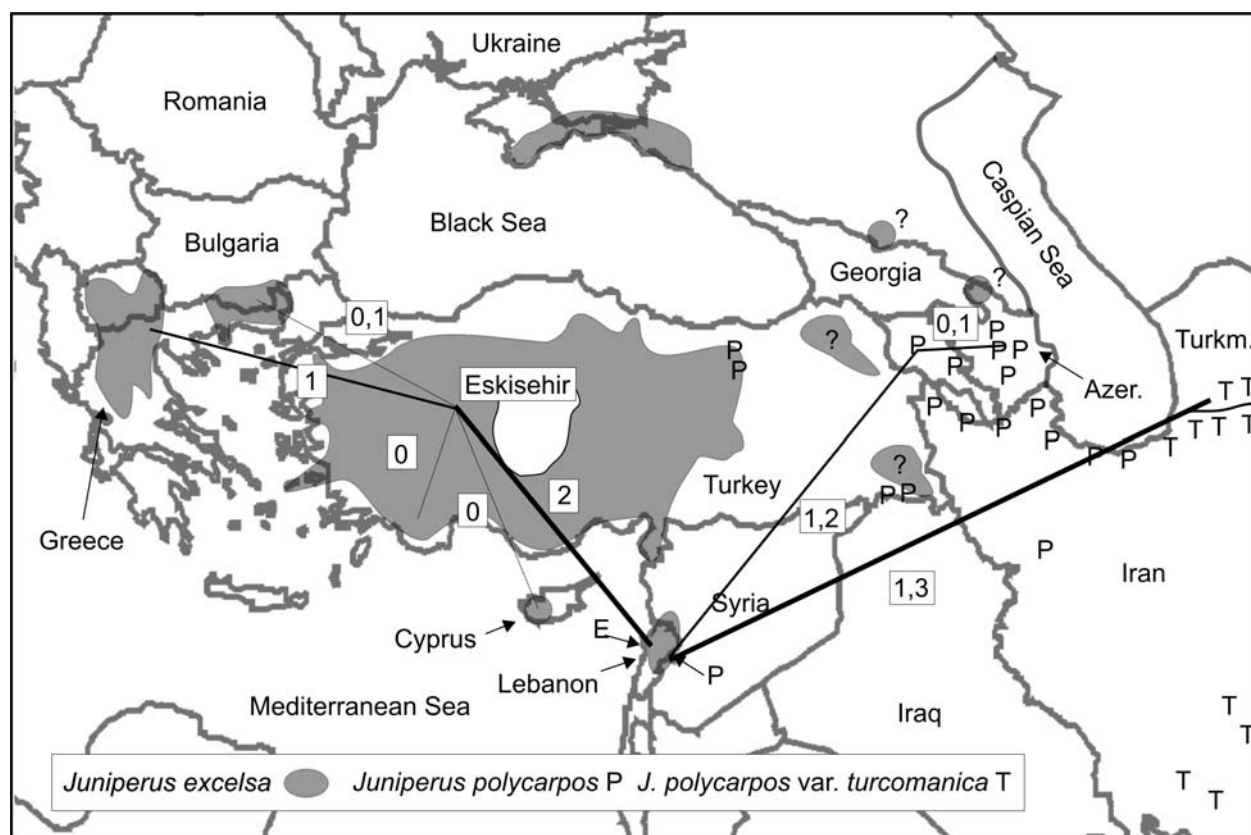


Figure 2. Minimum spanning network mapped onto the distributions of *J. excelsa* and *J. polycarpus*. Numbers next to lines are the number of MEs (Mutational Events = base substitutions plus indels).

Adams et al. (2016) concluded that *J. excelsa*, as sampled in their study, was a fairly uniform species, except for the unusual situation in Lebanon, where *J. excelsa* and *J. polycarpus* (and likely *J. p. var. turcomanica*) grow near each other and may be hybridizing. However, the genetic composition of the eastern-most populations of *J. excelsa* in Turkey was unknown and deserved additional study.

Farjon (2005, 2010) treated *J. polycarpus*, *J. p. var. seravschanica* and *J. p. var. turcomanica* as *J. excelsa* subsp. *polycarpus*. However, Adams et al. (2008), Adams and Schwarzbach (2012) and Adams (2013, 2014), utilizing DNA sequence data, recognized *J. excelsa*, in addition to *J. polycarpus*, *J. p. var.*

turcomanica and *J. seravschanica*. Adams and Hojjati (2012) and Adams, Hojjati and Schwarzbach (2014), using sequences from 4 gene regions, did not find *J. excelsa* in Iran, but did confirm *J. polycarpus*, *J. p.* var. *turcomanica* and *J. seravschanica* in Iran. Putative *J. excelsa* from Qushchi, in extreme northwest Iran, had none or only one SNP difference compared with *J. polycarpus* var. *polycarpus* from Armenia and was concluded to be *J. polycarpus* (Adams and Hojjati, 2012). Adams et al. (2014) found that putative *J. excelsa* in Azerbaijan was, in fact, *J. polycarpus* or in one case, a putative hybrid (*polycarpus* x *turcomanica*).

The distribution of *J. excelsa* in eastern Turkey has proved difficult to determine by modern methods of DNA sequencing, due to the lack of samples from these regions. Recently, materials were obtained of *J. excelsa* from central and eastern Turkey. This afforded the opportunity to further examine geographic variation of *J. excelsa* and *J. polycarpus*.

MATERIALS AND METHODS

Plant material - *J. excelsa*:

Bulgaria, Central Rhodopes, above the town of Kritchim, Reserve "Izgorialoto Gune", 42° 01' 22.0" N; 24° 28' 03.1" E, 356 m, *Alex Tashev, 2012-1-JE -5-JE*, 1 Sep 2012, Lab Acc. *Adams 13720-13724*;

Crimea: Karadigski Zapovidnyk, between Kurortne and Koktebel, 44.914° N, 35.215° E, 220m, *A. Boratynski, Y. Didukh, K. Romashenko, A. Romo, A. Susanna, 2001, KOR 49898*, Karadag near Kolhoznoe, 44° 28' 06" N, 33° 49' 54" E, ca 530m; *A. Boratynski, G. Iszkulo, A. Lewandowski, 2006, KOR 45630*; **Cyprus**: 34° 57' 45.82" N, 33° 59' 55.33" E, 1461m, *Salih Gucl ns, 3 July 2015*, Lab Acc. *Adams 14570-14574*; **Greece**: Lemos, ca 40° 49' N, 21° 03' E, 1100m, *Adams 5983-5985, 5987*;

Lebanon: Afqa, 34° 04' 58.12"N, 35° 53' 08.52" E, 1306 m, *Bouchra Douaihy 1-3*, 4 Nov 2013, Lab Acc. *Adams 14155-14157*; **Turkey**: Antalya-Manavgat, Köprülü Canyon National Park, 37° 20' N; 31° 16' E, 550 m, *Tuğrul Mataraci 2015-18*, 24 May 2015, Lab Acc *Adams 14569*; Isparta-Eğirdir, junction of Kasımlar-Sütçüler road, 37° 28' N; 30° 59' E, 1180 m, *Tuğrul Mataraci, 2015-7*, 24 May 2015, Lab Acc. *Adams 14596*; ~40 km north of Eskişehir, with Oaks, 39° 58.307"N; 30° 41.045° E, Turkey, 820m, *Adams 9433-9435*; Sırnak, se Turkey on Turkey/Iraq border, 37° 34' 08" N, 43° 09' 45" E, 1754m, *Metin Armagan ns*, Lab. Acc. *Adams 14709-14712*, Sırnak Turkey, on Turkey/Iraq border se Anatolia, Prov., near Beytussebab, GE ca 37° 37' 18"N, 42 52' 28" E, 1420m, *Metin Armagan ns*, Lab. Acc. *Adams14715*; 3 km from Unlupinar village towards Gumushane, 40° 14' 25.14" N; 39° 27' 19.17" E. ne Turkey, 1763m, *Ali Kandemir 10846*, Lab Acc. *Adams 14713*; around Lake Ardicli, near Ergan Mountains, near Erzincan. 39° 37' 47.45" N; 39° 29' 54.3" E. ne Turkey, 1797m, *Ali Kandemir 10850*, Lab Acc. *Adams 14714*; Material from specimens at the herbarium, Yüzüncü Yıl University, Van, Turkey: *Adams 14750- 1986*, 38° 28' 41.7" N, 43° 31' 20.6" E, 2800m; *Adams 14751- 1989*, 38° 08' 37.5" N, 42° 17' 15.2" E, 1550m; *Adams 14752*, 1995, 38° 36' 20.2" N, 38° 47' 35.0" E, 1700m; *Adams 14753- 1996*, 38° 40' 6.6" N, 38° 44' 58.6" E, 1600m; *Adams 14754- 2001*, 38° 20' 30.7" N, 43° 37' 44.9" E, 2000m; *Adams 14755- 2006*, 39°13'8.08"N 43° 23' 4.11"E, 1965m; *Adams 14756- 2014*, 38°04'33.6"N 43° 25' 32.0"E, 2010m; *Adams 14757- 2014*, 39° 07' 47" N, 38° 47' 0.5" E, 1275m; *Adams 14758- 2014*, 39° 07' 50.6" N, 39° 07' 27.2" E, 1720m; *Adams 14759- 2014*, 39° 19' 42.4" N, 39° 25' 41.3" E, 1860m; *Adams 14760- 2014*, 39° 21' 17.6" N, 39° 28' 28.8" E, 1890m;

J. polycarpus:

Armenia: Lake Sevan, 1900m, *Adams 8761-8763*; **Azerbaijan**, 40° 44' 41.05" N; 47° 35' 19.14" E, 177-231m, *Vahid Farzaliyev 1-10*, Dec 2013, Lab Acc. *Adams 14162-14171*; **Lebanon**:, Wadi El Njass, 34° 20' 47.79"N, 36° 05' 45.54"E, 2287m, *Bouchra Douaihy 4-7*, 14 Nov 2013, Lab Acc. *Adams 14158-14161*;

J. polycarpus* var. *turcomanica: **Turkmenistan**: Kopet Mtns., 38° 25.12'N, 56° 58.80'E, 1535 m, 22 May 1999, *Adams 8758-8790*;

J. procera: **Ethiopia**: on the road to Guder, ca. 40 km w of Addis Abba, ca. 9° 02'N, 38° 24' W, 2400 m, *Adams 6184-6188*;

***J. seravschanica*: Pakistan:** near Quetta, Baluchistan, *A. Hafeez Buzdar* ns, 6 Apr 1998, Lab Acc. Adams 8483-8485; **Kazakhstan:** west end of Talasskiy Ala-Tau Range, ca. 2 km S. of Dzhabagly, 42° 24.53'N, 70° 28.50'E, 1770m, 12 Sept 1997, Adams 8224-8226.

Voucher specimens deposited in the Herbarium, Baylor University (BAYLU).

One gram (fresh weight) of the foliage was placed in 20 g of activated silica gel and transported to the lab, thence stored at -20° C until the DNA was extracted. DNA was extracted from juniper leaves by use of a Qiagen mini-plant kit (Qiagen, Valencia, CA) as per manufacturer's instructions. Amplifications were performed in 30 µl reactions using 6 ng of genomic DNA, 1.5 units Epi-Centre Fail-Safe Taq polymerase, 15 µl 2x buffer E (petN, trnD-T, trnL-F, trnS-G) or K (nrDNA) (final concentration: 50 mM KCl, 50 mM Tris-HCl (pH 8.3), 200 µM each dNTP, plus Epi-Centre proprietary enhancers with 1.5 - 3.5 mM MgCl₂ according to the buffer used) 1.8 µM each primer. See Adams, Bartel and Price (2009) for the ITS and petN-psbM primers utilized. The primers for trnD-trnT, trnL-trnF and trnS-trnG regions have been previously reported (Adams and Kauffmann, 2010).

The PCR reaction was subjected to purification by agarose gel electrophoresis. In each case, the band was excised and purified using a Qiagen QIAquick gel extraction kit (Qiagen, Valencia, CA). The gel purified DNA band with the appropriate sequencing primer was sent to McLab Inc. (San Francisco) for sequencing. Sequences for both strands were edited and a consensus sequence was produced using Chromas, version 2.31 (Technelysium Pty Ltd.) or Sequencher v. 5 (genecodes.com). Sequence datasets were analyzed using Geneious v. R8 (Biomatters. Available from <http://www.geneious.com/>), the MAFFT alignment program. Further analyses utilized the Bayesian analysis software Mr. Bayes v.3.1 (Ronquist and Huelsenbeck 2003). For phylogenetic analyses, appropriate nucleotide substitution models were selected using Modeltest v3.7 (Posada and Crandall 1998) and Akaike's information criterion. Minimum spanning networks were constructed from mutational events (ME) data using PCODNA software (Adams et al., 2009; Adams, 1975; Veldman, 1967).

RESULTS AND DISCUSSION

The classification of samples on the basis of ITS and petN (cp data) is given in Table 1. First it should be noted that nrDNA does not distinguish *J. excelsa* (exc) from *J. p.* var. *turcomanica* (tur) (compare 1st table entry, Greece A G C C C T A exc vs. Turkmenistan (last entry) A G C C C T A tur.). Secondly, exc (or tur) is very distinct from pol in its nrDNA (exc: A G C C C T A vs. pol: C G T T T T C T). Thirdly, exc.(or tur) is very distinct from ser (exc: A G C C C T A vs. ser: C G C T T T C T). And, finally, nrDNA for pol has only one nucleotide different from ser (pol: C G T T T T C T vs ser: C G C T T T C T). Several plants had nrDNA from one taxon, but cp DNA from another taxon: El Njass (3 E,P); Metin e Turkey, 14757, (S,P); Azerbaijan 14171 (S,P); Elburz Mtn., Iran 12504 (S,P); Lushan, Iran 12798 (S,P); Hastjin, Iran 12795 (S,P); and Qushchi, Iran, 12798 (S,P). Other plants appeared to be hybrids by nrDNA: El Njass, 14161, PxE; Metin e Turkey 14753, PxS; Metin e Turkey 14754, PxS; Metin e Turkey 14758, PxS; ne Turkey 14714, PxS; se Turkey/ Iraq border 14715, PxT(or E); se Turkey/ Iraq border 14709, PxT(or E); se Turkey/ Iraq border 14710, PxT(or E); and Azerbaijan, 14165, PxT(or E).

To visualize this variation, plants were mapped with their nrDNA and cp (petN) DNA coded (Fig. 3). It is sometimes difficult to determine whether a variation is due to incomplete lineage sorting or hybridization (see discussion in Naciri and Linder, 2015). In the present study, the odd occurrence of *J. seravschanica* nrDNA in central-eastern Turkey plants seems more likely incomplete lineage sorting than hybridization, because no pure *J. seravschanica* grows sympatric with *J. polycarpus* in the area. Long distance cross-pollination is possible but unlikely as the nearest known *J. seravschanica* is quite distant (Fig. 4). In northwestern Iran one P,P and three S,P plants were found. This may be due to either hybridization or incomplete lineage sorting. Additional samples are needed to better understand that region.

Table 1. Classification of samples, on ITS and cp (petN) sequence data. exe = *excelsa*, pol = *polycarpus*, tur = *turcomanica*, ser = *seravschanica*. PxE = hybrid pol x exc; PxS = hybrid pol x ser; PxT(E) = pol x tur (or exc, as ITS for exe = tur).

source	acc #	230	232	238	354	427	732	8952	ITS	cp
n Greece, 1010m	8785	A	G	C	C	C	T	A	exc	exc
n Greece, 1010m	8786	A	G	C	C	C	T	A	exc	exc
n Greece, 903m	14742	A	G	C	C	C	T	A	exc	exc
Bulgaria, 365m	13720	A	G	C	C	C	T	A	exc	exc
Bulgaria, 365m	13721	A	G	C	C	C	T	A	exc	exc
Bulgaria, 365m	13722	A	G	C	C	C	T	A	exc	exc
Cyprus, 1461m	14570	A	G	C	C	C	T	A	exc	exc
Cyprus, 1461m	14571	A	G	C	C	C	T	A	exc	exc
Cyprus, 1461m	14572	A	G	C	C	C	T	A	exc	exc
Crimea, 220m	14906	A	G	C	C	C	T	A	exc	exc
Crimea, 530m	14907	A	G	C	C	C	T	A	exc	exc
sw Turkey, 550m	14569	A	G	C	C	C	T	A	exc	exc
sw Turkey, 1461m	14596	A	G	C	C	C	T	A	exc	exc
nw Turkey, Eskisehir, 820m	9433	A	G	C	C	C	T	A	exc	exc
nw Turkey, Eskisehir, 820m	9434	A	G	C	C	C	T	A	exc	exc
Afqa Leb M1, 1306m	14155	A	G	C	C	C	T	A	exc	exc
Afqa Leb M2, 1306m	14156	A	G	C	C	C	T	A	exc	exc
Afqa Leb M3, 1306m	14157	A	G	C	C	C	T	A	exc	exc
El Njass Leb M4, 2287m	14158	A	G	C	C	C	T	A	exc	poly
El Njass Leb M5, 2287m	14159	A	G	C	C	C	T	A	exc	poly
El Njass Leb M5, 2287m	14160	A	G	C	C	C	T	A	exc	poly
El Njass Leb M7, 2287m	14161	Y-C/T	G	Y-C/T	C	Y-C/T	Y-C/T	W-A/T	PxE	poly
Metin e Turkey, 2800m	14750	na	na	na	na	T	C	T	poly	poly
Metin e Turkey, 1550m	14751	C	G	T	T	T	C	T	poly	poly
Metin e Turkey, 1700m	14752	C	G	T	T	T	C	T	poly	poly
Metin e Turkey, 1600m	14753	C	G	T	Y-C/T	T	C	T	PxS	poly
Metin e Turkey, 2000m	14754	C	G	T	Y-C/T	T	C	T	PxS	poly
Metin e Turkey, 1965m	14755	C	A	T	T	T	C	T	poly	poly
Metin e Turkey, 2010m	14756	C	G	T	T	T	C	T	poly	poly
Metin e Turkey, 1275m	14757	C	G	T	C	T	C	T	serav	poly
Metin e Turkey, 1720m	14758	C	G	T	Y-C/T	T	C	T	PxS	poly
Metin e Turkey, 1860m	14759	C	G	T	T	T	C	T	poly	poly
Metin e Turkey, 1890m	14760	C	G	T	T	T	C	T	poly	poly
ne Turkey, 1,753m	14713	C	G	T	T	T	C	T	poly	poly
ne Turkey, 1,783m	14714	C	R-A/G	T	Y-C/T	T	C	T	PxS ^a	poly
se Turkey/ n Iraq, 1,420m	14715	Y-C/T	G	Y-C/T	C	Y-C/T	Y-C/T	W-A/T	PxT(E)	poly
se Turkey/ n Iraq, 1,743m	14709	Y-C/T	G	Y-C/T	C	Y-C/T	Y-C/T	W-A/T	PxT(E)	poly
se Turkey/ n Iraq, 1,743m	14710	Y-C/T	G	Y-C/T	C	Y-C/T	Y-C/T	W-A/T	PxT(E)	poly
se Turkey/ n Iraq, 1,743m	14711	C	G	T	T	T	C	T	poly	poly
se Turkey/ n Iraq, 1,743m	14712	C	G	T	T	T	C	T	poly	poly
Azerbaijan, 200m	14162	C	G	T	T	T	C	T	poly	poly
Azerbaijan, 200m	14163	C	R-A/G	T	T	T	C	T	poly ^a	poly
Azerbaijan, 200m	14164	C	G	T	T	T	C	T	poly	poly
Azerbaijan, 200m	14165	Y-C/T	G	Y-C/T	C	Y-C/T	Y-C/T	W-A/T	PxT(E)	poly
Azerbaijan, 200m	14166	C	G	T	T	T	C	T	poly	poly
Azerbaijan, 200m	14167	C	G	T	T	T	C	T	poly	poly
Azerbaijan, 200m	14168	C	G	T	T	T	C	T	poly	poly
Azerbaijan, 200m	14169	C	G	T	T	T	C	T	poly	poly
Azerbaijan, 200m	14170	C	G	T	T	T	C	T	poly	poly
Azerbaijan, 200m	14171	C	G	T	C	T	C	T	serav	poly
Armenia, 1900m	8761	C	G	T	T	T	C	T	poly	poly
Armenia, 1900m	8762	C	A	T	T	T	C	T	poly	poly
Elburz Mtn., Iran, 2033m	12603	C	G	T	T	T	C	T	poly	poly
Elburz Mtn., Iran, 2033m	12604	C	G	T	C	T	C	T	serav	poly
Lushan, Iran, 1120m	12789	C	G	T	C	T	C	T	serav	poly
Hastjin, Iran, 1610m	12795	C	G	T	C	T	C	T	serav	poly
Qushchi, Iran, 1760m	12798	C	G	T	C	T	C	T	serav	poly
Pakistan, seravschanica	8483	C	G	T	C	T	C	T	serav	serav
Pakistan, seravschanica	8484	C	G	T	C	T	C	T	serav	serav
Kazakhstan, seravschanica	8224	C	G	T	C	T	C	T	serav	serav
Kazakhstan, seravschanica	8225	C	G	T	C	T	C	T	serav	serav
Turkmenistan, turcomanica	8757	A	G	C	C	C	T	A	turc=exc	turco
Turkmenistan, turcomanica	8758	A	G	C	C	C	T	A	turc=exc	turco

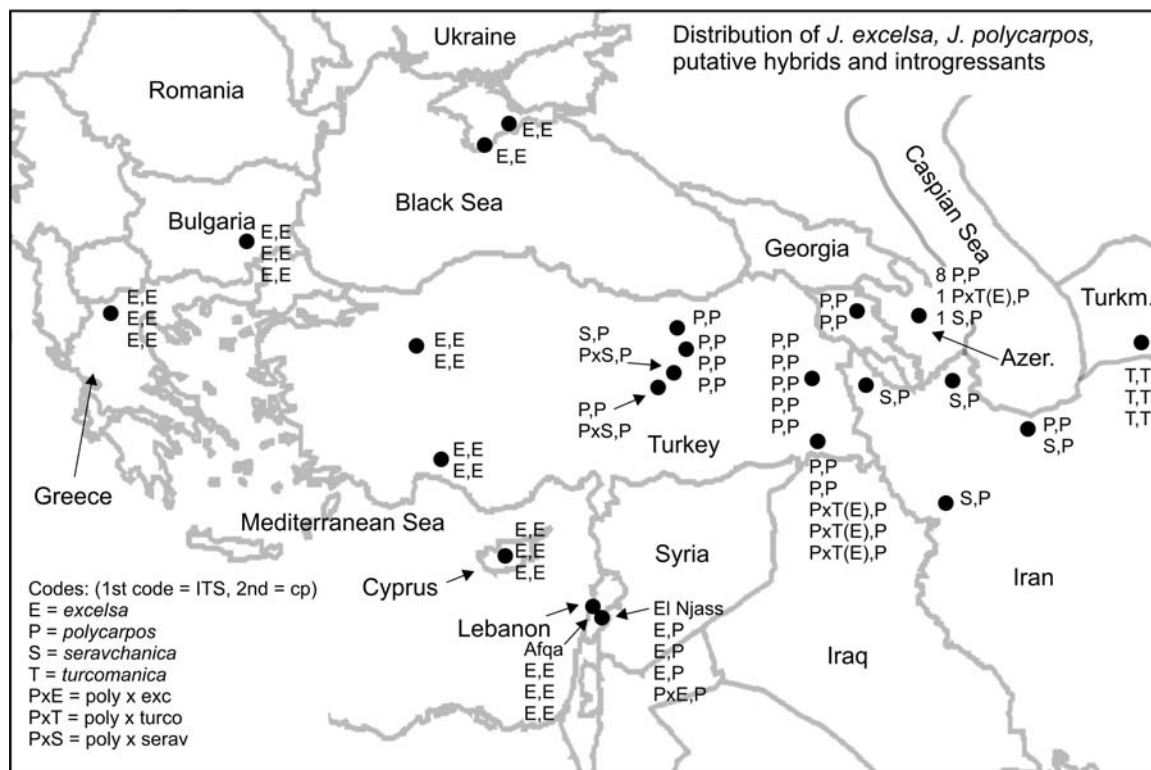


Figure 3. Distribution of *J. excelsa*, *J. polycarpus*, putative hybrids and introgressants based on ITS and cp sequences. The pair of capital letters (eg., E,E) gives the sample classification based on ITS (1st letter) and cp (2nd letter).

The situation in Lebanon seems to favor hybridization between *J. excelsa* and *J. polycarpus*, even though no pure *J. polycarpus* was found (Adams et al., 2014). Note the four plants in the El Njass population all have *J. polycarpus* cp, and one appears to be a ExP hybrid by nrDNA (Fig. 3). It seems likely that pure (P,P) *J. polycarpus* grows in the region, although these plants may have become extinct, in which case, this may be relictual hybridization.

Liao (1999), in a seminal paper on concerted evolution, defined it as "The molecular process that leads to homogenization of DNA sequences belonging to a given repetitive family". Liao reasoned that because rRNA functions only when assembled into large complexes, homogeneity of rRNAs is critical if all the steps of ribosome assembly and translation are to proceed normally. Liao (1999) says "One can therefore envision that a possible biological function of concerted evolution is to maintain homogeneous gene copies in a family so that homogeneous transcripts can be produced". However, it seems possible that there could be "silent" base substitutions that do not impact the shape or function of a rRNA. If so, these "silent" changes might persist indefinitely in a derived taxon.

Naciri and Linder (2015) estimated that typical tree species with N_e of 1 million individuals and a generation time of 10 yrs would require 50 M yr after speciation to reach full monophyly. Syring et al. (2007) concluded that the presence of shared nrDNA haplotypes among *Pinus* species was due to incomplete lineage sorting. They estimated that reciprocal monophyly will be more likely than paraphyly in 1.7 to 2.4 M yr, but complete genome-wide coalescence in species could take up to 76 M yr.

However, Bouillé and Bousquet (2005) examined trans-specific allelic polymorphism in three low-copy nuclear genes in different *Picea* species and they estimated that allelic coalescence time between randomly selected alleles in *Picea* was 10 to 18 million years ago. The effective population size can greatly effect coalescence times (Naciri and Linder, 2015), such that species with smaller effective population sizes would coalescence faster than species with larger effective population sizes.

Mao et al. (2010) published an ancestral reconstruction of *Juniperus* based on all three (3) known *Juniperus* fossils. They showed *J. excelsa* and *J. polycarpus* joined in a clade at approximately 7 M yr. If that result is correct, then the amount of time available for complete nrDNA coalescence in the *J. excelsa* - *J. polycarpus* clade seems insufficient, compared with the 10 to 18 M yr required in *Picea* species (Bouillé and Bousquet, 2005). The ca. 7 M yr in *J. excelsa/polycarpus* is far less than the 76 M yr that Syring et al. (2007) suggested was needed for coalescence of nrDNA in *Pinus*. It is difficult to know how accurate the dates are in Mao et al. (2010) due to the very small number (3) of *Juniperus* fossils used. But, it does appear that there has been insufficient time for complete coalescence of nrDNA in the present day *J. excelsa/J. polycarpus*. Incomplete lineage sorting would explain the presence of *J. seravschanica* (S) nrDNA in otherwise, typical *J. polycarpus* in central-eastern Turkey, Azerbaijan and northwest Iran (Fig. 3).

The currently understood distributions of *J. excelsa*, *J. polycarpus*, *J. seravschanica* and *J. p. var. turcomanica* are depicted in Figure 4. The dashed line in central Turkey indicates the boundary between *J. excelsa* and *J. polycarpus* is unknown at present. The population of *Juniperus* on the north coast of the Black Sea may be *J. excelsa* or *J. polycarpus*. Recent events have made it impossible to collect in that area.

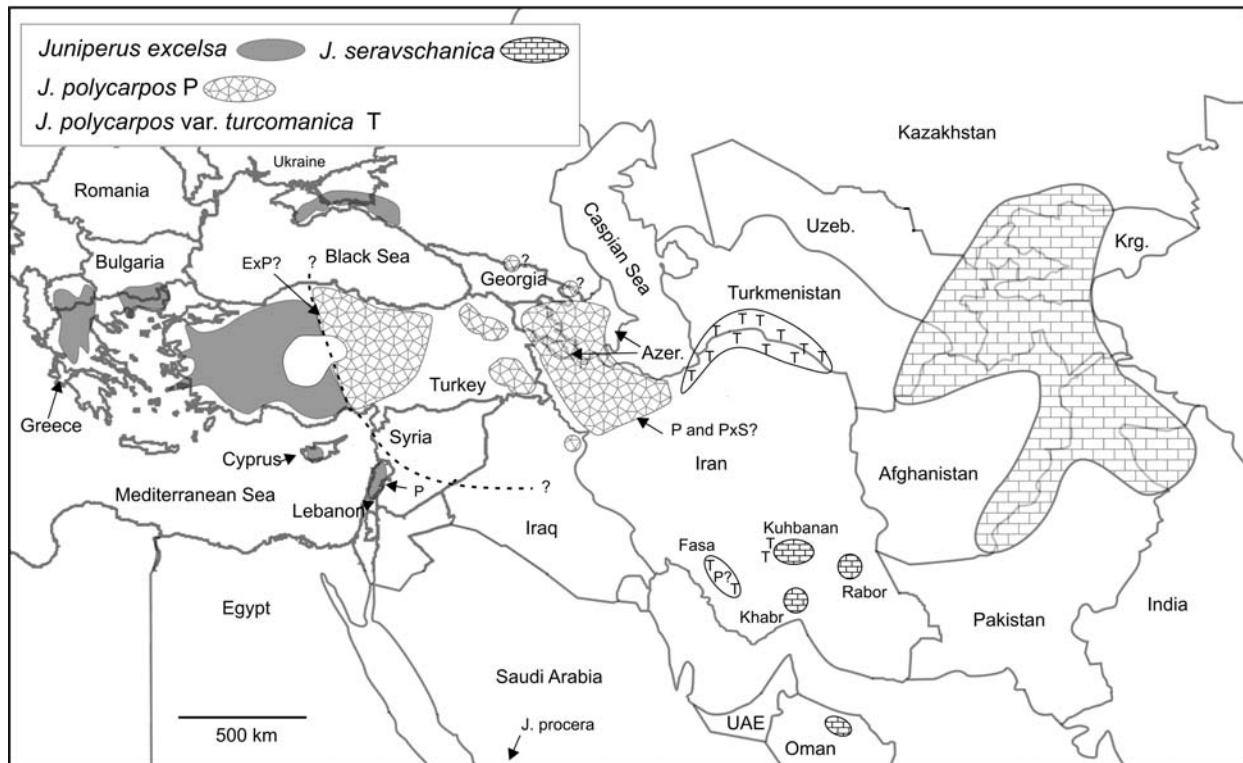


Figure 4. Distributions of *J. excelsa*, *J. polycarpus*, *J. p. var. turcomanica* and *J. seravschanica* as understood at present. The dashed line indicates the uncertain limits of *J. excelsa* and *J. polycarpus* in central Turkey. See text for discussion.

ACKNOWLEDGEMENTS

Thanks to Amy Tebeest for lab assistance and A. Kandemir for providing specimens. This research was supported in part with funds from Baylor University.

LITERATURE CITED

- Adams, R. P. 1975. Statistical character weighting and similarity stability. *Brittonia* 27: 305-316.
- Adams, R. P. 2013. Correction to Adams and Schwarzbach, Taxonomy of the multi-seeded, entire leaf taxa of the *Juniperus*, section *Sabina*: sequence analysis of nrDNA and four cp DNA regions. *Phytologia* 95: 226-227.
- Adams, R. P. 2014. The junipers of the world: The genus *Juniperus*. 4th ed. Trafford Publ., Victoria, BC.
- Adams, R. P., J. A. Bartel and R. A. Price. 2009. A new genus, *Hesperocyparis*, for the cypresses of the new world. *Phytologia* 91: 160-185.
- Adams, R. P., B. Douaihy, M. D. Dagher-Kharrat, A. E. Schwarzbach and V. Farzaliyev. 2014. Geographic variation in nrDNA and four cpDNAs sequences of *Juniperus excelsa* and *J. polycarpus* in Greece, Turkey, Lebanon and Azerbaijan. *Phytologia* 96: 89-95.
- Adams, R. P. and F. Hojjati. 2012. Taxonomy of *Juniperus* in Iran: Insight from DNA sequencing. *Phytologia* 94: 219-227.
- Adams, R. P., F. Hojjati and A. E. Schwarzbach. 2014. Taxonomy of *Juniperus* in Iran: DNA sequences of nrDNA plus three cpDNAs reveal *Juniperus polycarpus* var. *turcomanica* and *J. seravschanica* in southern Iran. *Phytologia* 96: 19-25.
- Adams, R. P. and M. E. Kauffmann. 2010. Geographic variation in nrDNA and cp DNA of *Juniperus californica*, *J. grandis*, *J. occidentalis* and *J. osteosperma* (Cupressaceae). *Phytologia* 92: 266-276.
- Adams, R. P., J. A. Morris and A. E. Schwarzbach. 2008. Taxonomic study of *Juniperus excelsa* and *J. polycarpus* using SNPs from nrDNA and cp trnC-trnD plus essential oils and RAPD data. *Phytologia* 90: 208-225.
- Adams, R. P. and A. E. Schwarzbach. 2012. Taxonomy of the multi-seeded, entire leaf taxa of *Juniperus* section *Sabina*: Sequence analysis of nrDNA and four cpDNA regions. *Phytologia* 94: 350-368.
- Adams, R. P., S. Guçel, T. Mataraci, A. N. Tashev, B. Douaihy and M. D. Dagher-Kharrat, V. Farzaliyev and A. E. Schwarzbach. 2016. Geographic variation in nrDNA and four cpDNA regions of *Juniperus excelsa*: Analysis of new records from Bulgaria, Cyprus and southwestern Turkey. *Phytologia* 98: 1-7.
- Bouillé, M., and J. Bousquet. 2005. Trans-species shared polymorphisms at orthologous nuclear genes loci among distant species in the conifer genus *Picea* (Pinaceae): Implications of the long-term main
- Douaihy, B. G., G. Restoux, N. Machon and M. B. Dagher-Karrat. 2013. Ecological characterization of the *Juniperus excelsa* stands in Lebanon. *Ecologia Mediterranea* 39: 169-180.
- Douaihy, B. G., G. Vendramin, A. Boratynski, N. Machon and M. B. Dagher-Karrat. 2011. High genetic diversity with moderate differentiation in *Juniperus excelsa* from Lebanon and the eastern Mediterrean region. *AoB PLANTS* 2011 pir003 doi:10.1093/aobpla/pir003.
- Farjon, A. 2005. A monograph of Cupressaceae and *Sciadopitys*. Royal Botanic Garderns, Kew Press, London.
- Farjon, A. 2010. A handbook of the world's conifers. Vol. I. Koninklijke Brill NV, Leiden, The Netherlands.
- Liao, D-Q. 1999. Concerted evolution: Molecular mechanism and biological implications. *Am. J. Hum. Genetics* 64: 24-30.
- Mao, K-S., G. Hao, J-Q. Liu, R. P. Adams and R. I. Milne. 2010. Diversification and biogeography of *Juniperus* (Cupressaceae): Variable diversification rates and multiple intercontinental dispersals. *New Phytologist* 188: 254-272.
- Naciri Y. and H. P. Lindler. 2015. Species delimitation and relationships: The dance of the seven veils. *Taxon* 64: 3-16.

- Posada, D. and K. A. Crandall. 1998. MODELTEST: testing the model of DNA substitution. *Bioinformatics* 14: 817-818.
- Ronquist, F. and J. P. Huelsenbeck. 2003. MrBayes 3: Bayesian phylogenetic inference under mixed models. *Bioinformatics* 19: 1572-1574.
- Syring, J., K. Farrell, R. Businsky, R. Cronn and A. Liston. 2007. Widespread genealogical nonmonophyly in species of *Pinus subgenus Strobilus*. *Syst. Biol.* 56: 163-181.
- Veldman, D. J., 1967. Fortran programming for the behavioral sciences. Holt, Rinehart and Winston Publ., NY.