

University of Texas Rio Grande Valley

ScholarWorks @ UTRGV

---

Earth, Environmental, and Marine Sciences  
Faculty Publications and Presentations

College of Sciences

---

10-20-2020

## Brown spot in table grape Redglobe controlled in study with sulfur dioxide and temperature treatments

Cassandra A. Young

Robin A. Choudhury

*The University of Texas Rio Grande Valley*

Carlos H. Crisosto

W. Douglas Gubler

Follow this and additional works at: [https://scholarworks.utrgv.edu/eems\\_fac](https://scholarworks.utrgv.edu/eems_fac)



Part of the [Earth Sciences Commons](#), [Environmental Sciences Commons](#), and the [Marine Biology Commons](#)

---

### Recommended Citation

Young C, Choudhury R, Crisosto C, Gubler W. 2020. Brown spot in table grape Redglobe controlled in study with sulfur dioxide and temperature treatments. *Calif Agr* 74(3):163-168. <https://doi.org/10.3733/ca.2020a0022>.

This Article is brought to you for free and open access by the College of Sciences at ScholarWorks @ UTRGV. It has been accepted for inclusion in Earth, Environmental, and Marine Sciences Faculty Publications and Presentations by an authorized administrator of ScholarWorks @ UTRGV. For more information, please contact [justin.white@utrgv.edu](mailto:justin.white@utrgv.edu), [william.flores01@utrgv.edu](mailto:william.flores01@utrgv.edu).

# Brown spot in table grape Redglobe controlled in study with sulfur dioxide and temperature treatments

A popular export table grape variety showed no disease development for 32 days at 2°C after being treated with 200 ppm-h SO<sub>2</sub>.

by Cassandra A. Young, Robin A. Choudhury, Carlos H. Crisosto and W. Douglas Gubler

Online: <https://doi.org/10.3733/ca.2020a0022>

California is the leading producer of table grapes. In 2019 table grapes accounted for 130,000 acres of the 918,000 acres of grapes grown in the state, with 6,588 acres grown with the variety Redglobe (Cdfa 2020). The cultivar Redglobe is a variety popular for export markets, including China and Mexico, because of its flavor and long shelf life (Dokoozlian et al. 1996). Brown spot can cause major postharvest fruit loss in Redglobe and other late-harvest cultivars such as Crimson Seedless and Autumn King (Swett et al. 2016). No reliable control of brown spot has been found.

A study by Swett et al. (2014) showed 100% of Redglobe clusters collected from a commercial field in Delano, in the San Joaquin Valley, had latent infections of *Cladosporium* species responsible for brown spot disease. Redglobe clusters may be stored for 2 to 3 months before they are shipped to Asia. When symptomless berries are in cold storage conditions for long periods, brown spot disease begins to emerge and spread (Swett et al. 2016). While initial infections occur

## Abstract

Brown spot is a postharvest disease of grapes caused by *Cladosporium* species in the San Joaquin Valley of California. It spreads during cold storage and transport, resulting in severe economic losses to late table grape cultivars, which are grown mainly for export to countries such as China and Mexico. We examined the effect of temperature and sulfur dioxide (SO<sub>2</sub>) treatments on fungal growth and infection of Redglobe berries by three *Cladosporium* species: *Cladosporium ramotenellum*, *C. cladosporioides* and *C. limoniforme*. Redglobe is especially popular for export. Fungal colonies growing on potato dextrose agar in petri plates stored at -2°C grew slower than those stored at 2°C, and an 400 ppm-h SO<sub>2</sub> treatment significantly reduced fungal growth of all three species and at all temperatures tested. Redglobe berries inoculated with the *Cladosporium* species, treated with SO<sub>2</sub> concentrations of 100 ppm-h, 200 ppm-h and 400 ppm-h and incubated in high relative humidity chambers for 28 to 32 days at 2°C, showed little incidence of disease. The development of brown spot on berries was entirely prevented with the treatment of 200 ppm-h SO<sub>2</sub> for all *Cladosporium* species tested.

Harvested Redglobe table grapes. This variety is popular for export but can develop brown spot disease while in cold storage and transport. Laboratory test results indicate that sulfur dioxide treatments of at least 200 ppm-h can prevent the disease.





in the field, once in post-harvest, infection can also easily spread from berry to berry through epidermis contact with no wounding necessary and in temperatures as low as  $-2^{\circ}\text{C}$  (Swett et al. 2016). Brown spot is a major source of economic loss for grapes during long distance transport.

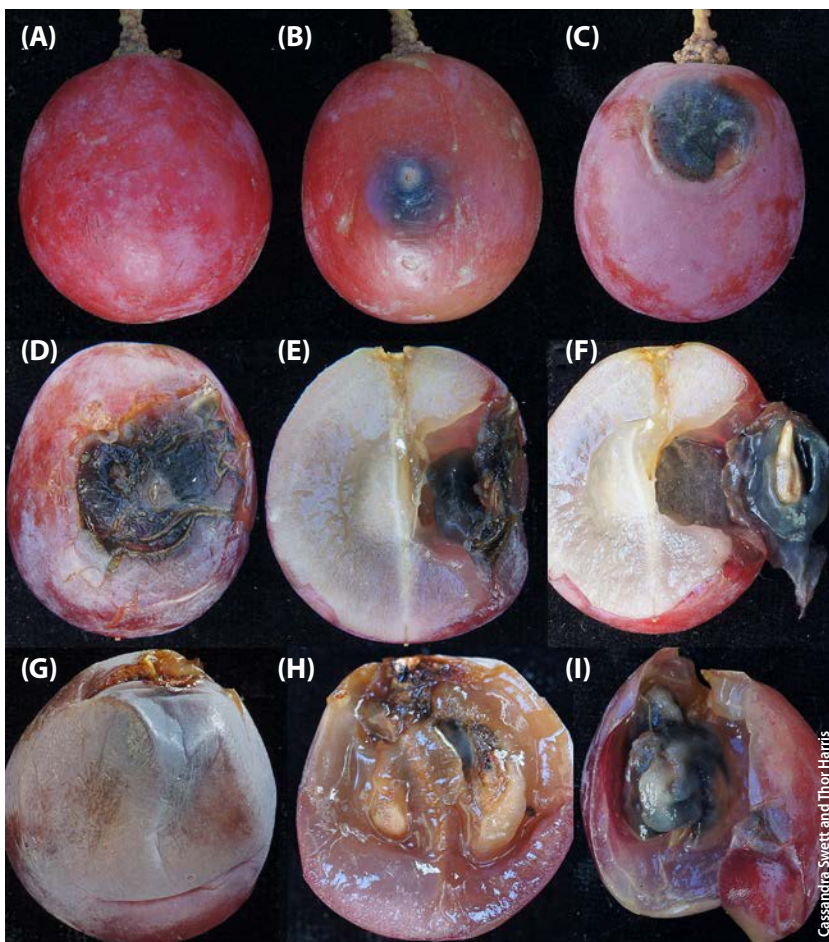
Attempts to manage brown spot have relied on strategies developed for the control of gray mold, a severe postharvest disease caused by the fungus *Botrytis cinerea* (Cantín et al. 2011; Coertze et al. 2001; Crisosto et al. 1994; Lee et al. 2015; Palou et al. 2001). Gray mold (*Botrytis cinerea*) and brown spot (*Cladosporium* spp.) have similar biology, such as infection timing, occurrence of a latency period and timing of symptoms expression (Coertze et al. 2001; Crisosto et al. 2002; Crisosto et al. 1994; Fourie 2008; Palou et al. 2001; Swett et al. 2014). However, the common practice of using 100 to 200 parts per million per hour (ppm-h) sulfur dioxide ( $\text{SO}_2$ ) treatments used to control gray mold during cold storage and during transport has not been effective for the control of brown spot (Lee et al. 2015; Palou et al. 2001; Serey et al. 2007; Smits et al. 2003; Teles et al. 2014).

Brown spot has been attributed to several species of the *Cladosporium herbarum* species complex (*C. ramotenellum*, *C. tenellum*, *C. limoniforme*) and *C. cladosporioides* (Crous et al. 2007; Swett et al. 2016). As described by Swett et al. (fig. 1), typically a fluffy, light green to white mycelial mat will form where infection has taken place on the berry epidermis. A mycelial callosus can form under the epidermis as a result of an internal infection, creating a scab and a brown spot on the underside of the epidermis. As the infection progresses, the scab will encompass the seed of the grape, forming a fungal fruiting body that eventually replaces the grape seed placenta, and prolific sporulation will occur on the seed (Swett et al. 2016; fig. 1).

In the last 20 years, a total utilization technique for fumigant applications of  $\text{SO}_2$  during cold storage has been established for table grapes; it increases efficiency, reduces environmental pollution and protects operators (Crisosto and Mitchell 2002; Luvisi et al. 1992; Palou et al. 2002). An important step of the technique is to apply the first  $\text{SO}_2$  treatment ( $\sim 100$  to  $150$  ppm-h) during the initial forced-air cooling of the grapes after harvest, which is then followed by weekly applications during cold storage with homogenous air distribution (Luvisi et al. 1992). The total utilization technique system uses  $\sim 10$  times less  $\text{SO}_2$  than the previous standard fumigation system, but it requires uniform room air distribution for the treatment to be effective (Crisosto and Mitchell 2002).

The total utilization technique was based on laboratory studies that revealed that at least  $100$  ppm-h  $\text{SO}_2$  was necessary to kill *B. cinerea* conidia and inactivate exposed mycelia at  $0^{\circ}\text{C}$  (Smilanick and Henson 1992). Even less than  $100$  ppm-h was effective at warm temperatures to cause the death of conidia and mycelium of *B. cinerea* on grape (Crisosto and Mitchell 2002; Luvisi et al. 1992). These latter studies confirmed that  $\text{SO}_2$  applied at  $200$  ppm-30 min,  $400$  ppm-15 min,  $50$  ppm-2 h or  $25$  ppm-4 h was as effective as the  $100$  ppm-h treatment (Crisosto et al. 2002; Palou et al. 2001, 2002). The sensitivity of *B. cinerea* conidia to  $\text{SO}_2$  increases two- to four-fold for every  $10^{\circ}\text{C}$  increment between  $0$  and  $32^{\circ}\text{C}$ , because of the effect of temperature on  $\text{SO}_2$  absorption on the fruit, fungi and surrounding packaging (Smilanick and Henson 1992).

$\text{SO}_2$  has mainly been used to control gray mold disease of table grapes, but the low application rates applied as part of the total utilization technique have not prevented the emergence and spread of brown spot during cold storage (Fernández-Trujillo et al. 2012). The objectives of our two-part study were (1) to evaluate, in vitro, the effect of temperature and  $\text{SO}_2$  concentration over time applications on fungal colony growth of three *Cladosporium* species (*C. ramotenellum*, *C. cladosporioides* and *C. limoniforme*), and (2) to determine the efficacy of different  $\text{SO}_2$  concentrations over time in inhibiting the growth of *Cladosporium* species on artificially inoculated Redglobe berries.



**FIG. 1.** Brown spot postharvest on grape. (A) healthy berry, (B) early brown spot, (C) brown spot with cavity and fungal sporulation, (D) advanced brown spot, (E) fungal growth inside the berry, (F) fungus replacing the placenta and encasing the seed, (G) infected berry with no external spot, (H) spores lining the interior of the mycelial mat, (I) berry placenta replaced by fungal growth. Source: Swett et al. 2016.

## Origin of fungal isolates

*Cladosporium* species (*C. ramotenellum*, *C. cladosporioides* and *C. limoniforme*) were isolated from brown spot-symptomatic berries grown in Delano, California, from 2013 to 2015. Species isolates were obtained from symptomatic tissue placed on 150 by 15 mm (millimeter) petri plates with 3% rose bengal potato dextrose agar (Difco Laboratories, Detroit, Mich.) amended with 500 ppm tetracycline and 300 ppm streptomycin.

*Cladosporium* colonies were hyphal tipped after 7 days to produce pure cultures for species identification. PCR (polymerase chain reaction) amplification of the actin gene using primers ACT-512 and ACT-783 and DNA sequencing confirmed the identity of species (Swett et al. 2016). Species isolates were maintained in Dr. W. Douglas Gubler's laboratory, Department of Plant Pathology, UC Davis, as of June 2016. Pathogenicity was demonstrated when species isolates were inoculated and re-isolated from lesions on Crimson Seedless berries following standard protocols (Swett et al. 2016).

## Source, preparation of grapes

Redglobe berries were obtained from a commercial vineyard in Delano. Asymptomatic, nonwounded berries were removed from clusters with the pedicel still intact by clipping with sterile scissors. Berries were then vigorously washed in a 0.5% potassium chloride and 0.1% Tween 20 solution to remove surface debris. Berries were surface disinfected first in a 70% ethanol solution for 30 seconds, then in a 10% bleach solution for 5 minutes, and dried in a sterile laminar flow hood (Dugan et al. 2002).

Dry berries ( $n = 9$  per fungal species tested) were aseptically distributed in triplicate on sterilized polyethylene chambers (215 by 300 by 105 mm) on sterilized polyethylene grids (210 by 297 mm) at 2°C with high relative humidity (RH 93%). RH was obtained with paper towels moistened with sterile deionized water and placed below a plastic grid. RH was measured with a humidity sensor (HOBO, Onset Computer Co., Bourne, Mass.).

## Mycelial growth study

To determine the effect of temperature and SO<sub>2</sub> on fungal growth, potato dextrose agar (PDA) plates were inoculated with one of three species: *C. ramotenellum*, *C. cladosporioides* or *C. limoniforme*. Inoculum was grown on 2% PDA at 23°C for 5 to 7 days. Plugs of colonized PDA obtained with a sterile 4-mm cork borer were placed on a 2% PDA plate, spore side down. The baseline for all measurements was 4 mm.

Inoculated plates were incubated in a polyethylene chamber at 23°C for 13 hours. The petri plates were moved to a fumigation chamber and exposed to the three SO<sub>2</sub> treatments while still lidded. SO<sub>2</sub>



concentrations were measured using passive colorimetric dosimeter tubes (Gastec Corp., Ayase-Shi, Japan) and a portable SO<sub>2</sub> detector that continuously measured SO<sub>2</sub> concentration inside the fumigation chambers (Palou et al. 2002). Dosimeter tubes were taped to chamber walls opposite the SO<sub>2</sub> flow as well as inside of a petri plate. Untreated controls were inoculated as previously described, received no SO<sub>2</sub> exposure but were treated and incubated identically. For each species, three petri plates were inoculated and treated in triplicate and were incubated at 2°C and -2°C for up to 32 days after treatment.

Radial measurements of fungal colonies were taken to assess the effect of SO<sub>2</sub> concentration over time on mycelial growth. Colony measurements were taken from the reverse side of the lidded petri plate. Using a polyethylene ruler, two perpendicular diameter measurements were made and averaged to determine overall colony size. The diameter of the mycelium plug inoculum (4 mm) was included as the minimal measurement for all treatments. Measurements were taken every 6 to 8 days during incubation at 2°C and -2°C.

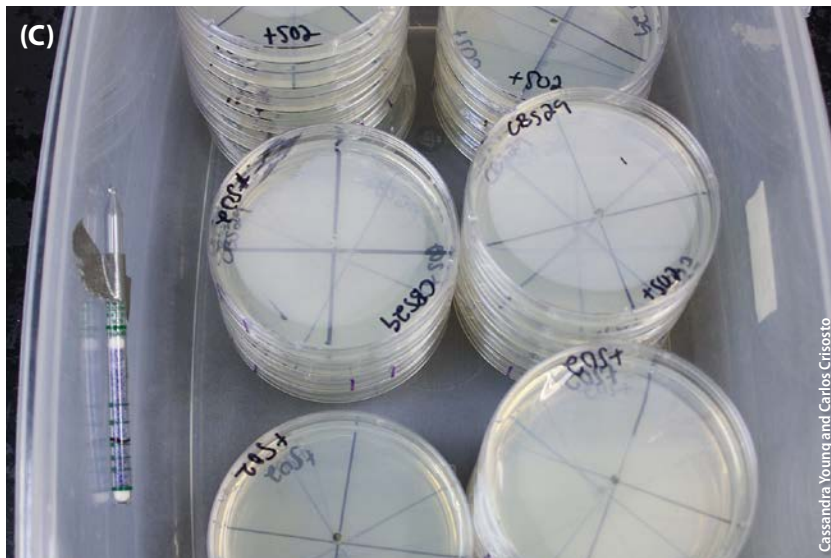
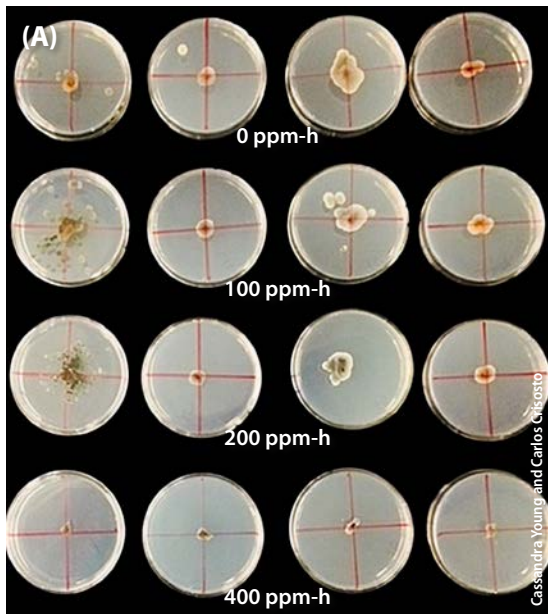
## Inoculated berry study

Inoculated berries were not wounded prior to inoculation. Inoculum was prepared with 14-day-old cultures grown on PDA. Spores were suspended in 0.5% potassium chloride and 0.1% Tween 20 in sterile distilled water. Spore density was determined using a hemocytometer, and the suspension was adjusted to  $1 \times 10^7$  spores/mL by the addition of sterile deionized water.

The shoulder of each berry was inoculated by placing 10 µL of spore suspension within a 4-mm Vaseline ring, to prevent the inoculum from moving. Berries were positioned with the inoculated shoulder facing up. Untreated controls consisting of berries inoculated with sterile deionized water were included for each temperature and SO<sub>2</sub> treatment. Berry lesions on unwounded berries were measured after 28 days of storage at 2°C.

Petri plates inoculated with one of three species — *C. ramotenellum*, *C. cladosporioides* or *C. limoniforme* — in a fumigation chamber and exposed to the three SO<sub>2</sub> treatments while still lidded. SO<sub>2</sub> concentrations were measured using passive colorimetric dosimeter tubes and a portable SO<sub>2</sub> detector.





**FIG. 2.** (A) Mycelial growth of *C. cladosporioides*, *C. limoniforme* and *C. ramotenellum* in lidded petri plates treated with SO<sub>2</sub> of 0, 100, 200 or 400 ppm-h. (B) Passive colorimetric dosimeter tubes were used to measure SO<sub>2</sub> concentrations. (C) One was placed inside each fumigation chamber, opposite the SO<sub>2</sub> input valve.

## Concentration-time SO<sub>2</sub> treatments

Twenty-four hours after berries were inoculated with one of the three *Cladosporium* species, they were exposed to three concentration-over-time treatments of gaseous SO<sub>2</sub>: 100 ppm-h (100 µL/L per h), 200 ppm-h (100 µL/L per 0.5 h) or 400 ppm-h (100 µL/L per 0.25 h) (Palou et al. 2001). SO<sub>2</sub> concentrations were measured as previously mentioned. Dosimeter tubes were taped to chamber walls opposite the SO<sub>2</sub> flow.

For both studies, fumigation chambers were Sterilite containers (Sterilite, Townsend, Mass.) modified to allow for a rubber tube to flow SO<sub>2</sub> into the chamber. Chambers were placed inside a biological safety cabinet during treatment. Chamber lids were opened once a treatment was concluded and the inoculated berries on a grid/mycelial plugs on petri plates were placed into polyethylene chamber to be stored in cold storage.

## Statistical analysis

Radial growth of *Cladosporium* colonies was analyzed using a linear mixed model approach for all three species using the R package lme4 (Bates et al. 2014). The mixed model used a Gaussian error distribution and consisted of SO<sub>2</sub> treatments, temperature and species as fixed effects and replicate as a random effect. We calculated the estimated marginal means and computed all pairwise comparisons using Tukey's honestly significant difference (HSD) test.

For the berry study, we analyzed the proportion of infected berries with a linear mixed model approach using a Gaussian error distribution for all species, with SO<sub>2</sub> treatments and species as fixed effects and replicate as a random effect and computed all pairwise comparisons using Tukey's HSD test.

## Fungal growth significantly reduced

Radial colony growth of the three *Cladosporium* species on petri plates with PDA was significantly reduced by the 400 ppm-h SO<sub>2</sub> treatment, as seen in figures 2 and 3. The 400 ppm-h concentration was most effective against *C. cladosporioides* when petri plates were incubated at -2°C, which resulted in no radial growth. The 400 ppm-h was also effective in slowing *C. cladosporioides* colony growth at 2°C; radial growth grew only from 4 to 9 mm on average.

Radial colony growth of *C. limoniforme* and *C. ramotenellum* was also slowed down at 400 ppm-h,

growing from 4 to 5 mm and 4 to 6 mm, respectively, at  $-2^{\circ}\text{C}$ . However, the same treatment was less effective at  $2^{\circ}\text{C}$ , where, on average, fungal radial growth reached 10 mm for *C. limoniforme* and 12 mm for *C. ramotenellum* after 30 days. At the lower  $\text{SO}_2$  ppm-h (200 ppm-h, 100 ppm-h), there was no significant difference in radial colony growth between any of the treated species and the untreated controls by 30 days at  $2^{\circ}\text{C}$ .

All species after 10 days at  $-2^{\circ}\text{C}$  had reduced colony growth for all concentrations compared with those incubated at  $2^{\circ}\text{C}$ . The colony growth of *C. cladosporioides* at  $-2^{\circ}\text{C}$  was slower than that of the other species; and it was also slower than the colony growth of *C. cladosporioides* incubated at  $2^{\circ}\text{C}$ , illustrating the effect of temperature on rate of growth.

## 200 ppm-h treatment eliminated disease

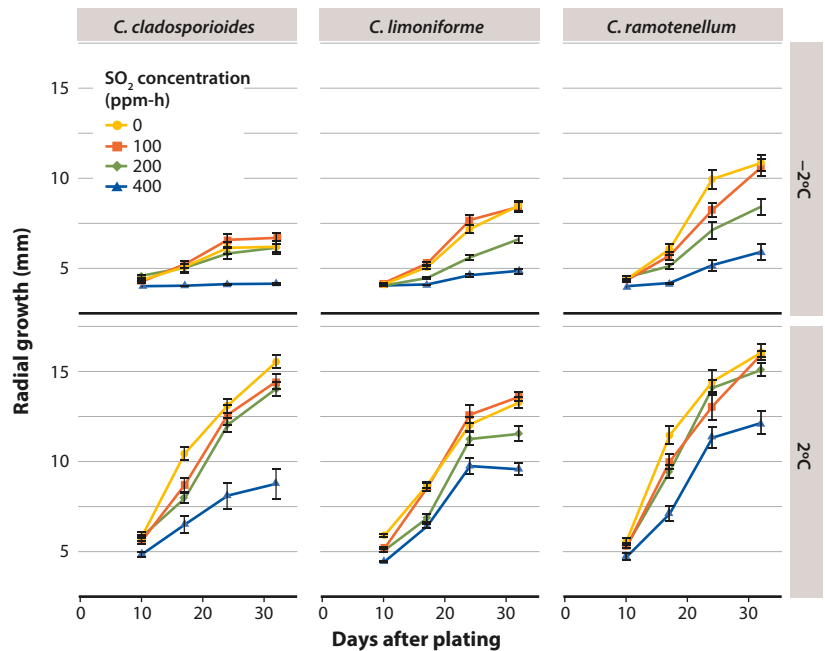
In the berry study, all *Cladosporium* species caused disease in untreated control berries: *C. cladosporioides* caused disease in 65% of berries, *C. limoniforme* in 55% berries and *C. ramotenellum* in 75% of berries (fig. 4). By contrast,  $\text{SO}_2$  treatments significantly reduced disease incidence by *Cladosporium* species on inoculated Redglobe berries.

The 100 ppm-h treatment reduced disease incidence to less than 25% of berries for all species. The 200 ppm-h treatment was the most effective, in that it eliminated disease for all three *Cladosporium* species tested. In the 400 ppm-h treatment, there was less than 5% disease incidence in berries inoculated with *C. ramotenellum* and no infection occurred in berries inoculated with *C. cladosporioides* or *C. limoniforme*. Nevertheless, there was no statistically significant difference in the proportion of infected berries between the 100, 200 and 400 ppm-h  $\text{SO}_2$  treatments of the three *Cladosporium* species tested (fig. 4).

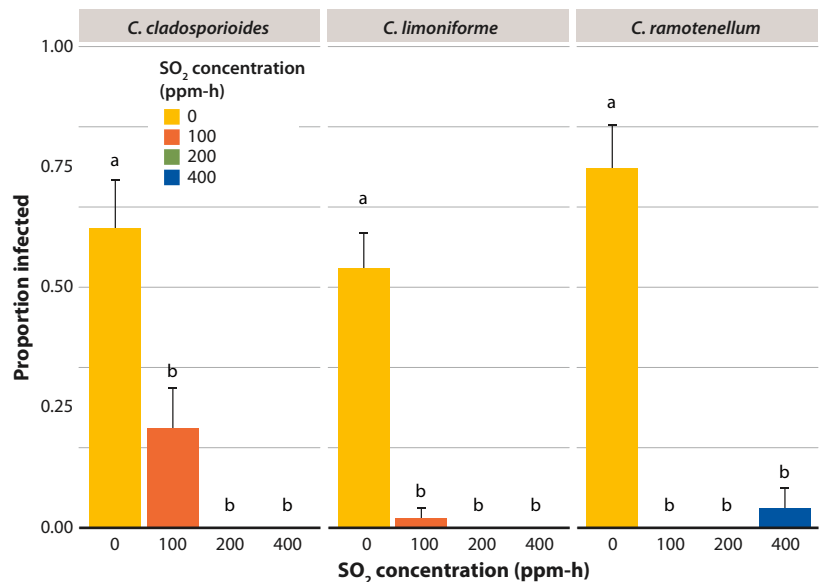
## Potential of $\text{SO}_2$ as a control for brown spot

Our results demonstrate that a single application before cold storage of at least 200 ppm-h  $\text{SO}_2$  at cold storage temperatures may be an effective tool for reducing brown spot disease incidence on grape berries, although the ability of mycelium of *Cladosporium* species to grow on PDA growth medium in petri plates with an  $\text{SO}_2$  application was somewhat variable. We have demonstrated  $\text{SO}_2$  of 200 ppm-h and 400 ppm-h essentially prevent disease development in Redglobe berries from the three *Cladosporium* species tested. *C. cladosporioides* exhibited tolerance at 100 ppm-h, whereas 100 ppm-h was effective against *C. ramotenellum* and *C. limoniforme*. While mycelial growth on PDA was reduced with a treatment of 400 ppm-h  $\text{SO}_2$ , mycelial growth was not completely eliminated. Additionally, *C. ramotenellum* grows faster than the other species on a petri plate with PDA, regardless of temperature or  $\text{SO}_2$

treatment. Unsurprisingly, in the berry study, inoculation of *C. ramotenellum* resulted in the highest disease incidence in the untreated control berries. Our study also confirmed the critical importance of maintaining table grapes below  $0^{\circ}\text{C}$  and above their freezing point to maximize their storage life potential (Crisosto and Mitchell 2002).




**FIG. 3.** Influence of 0, 100, 200 and 400 ppm-h  $\text{SO}_2$  on radial growth of three *Cladosporium* species plated on PDA growth medium using a 4-mm mycelial plug inoculum. Lidded petri plates were incubated in cold storage at  $-2^{\circ}\text{C}$  and  $2^{\circ}\text{C}$  for up to 32 days. Mean  $\pm$  standard error.



**FIG. 4.** Influence of  $\text{SO}_2$  at three concentrations on the proportion of infected Redglobe berries after inoculation with three species of *Cladosporium*. After inoculation, berries were placed in cold storage at  $2^{\circ}\text{C}$ , RH 93%. Lesions on berries were measured at 28 days. Mean  $\pm$  standard error. Letters represent significant difference at  $\alpha = 0.05$ , according to Tukey's honestly significant difference (HSD) test.

These results are promising for the control of brown spot during long-term storage and export of Redglobe table grapes. Although not much is known about the natural berry infection by *Cladosporium*, we do know that infection can occur on the surface through the epidermis and may also be a latent infection where infection starts from within the berry. Berries used in our experiments were surface sterilized before inoculation so we could be sure that infection occurred through the epidermis with our inoculum; thus, we can conclude the SO<sub>2</sub> application prevented disease from of the *Cladosporium* surface inoculum. However, SO<sub>2</sub> may not be adequate to prevent infection resulting from latent infection, causing internal rot of the berry and inoculum production, but may inhibit the resulting spread if applied after the emergence of fungal growth (Harvey 1955; Lee et al. 2015; Swett et al. 2016).

This work demonstrates a potential management strategy of brown spot post-harvest. In practice, multiple factors can influence the amount of gaseous SO<sub>2</sub> that comes into contact with the berry surface, including air flow in storage, sorption of packing materials

and the amount of condensation on berries, which can absorb gasses. Additionally, a single application of SO<sub>2</sub> is typically not as effective as multiple SO<sub>2</sub> applications, but multiple applications may not be feasible during transport (Crisosto et al. 2002). Total utilization technique focused on gray mold control applies SO<sub>2</sub> at 100 to 150 ppm-h, which may be too low to be effective against brown spot, especially under cold storage conditions. Future studies should be done to improve sampling and the detection of brown spot in the field prior to harvest as well as during postharvest, so this research can be applied to known compromised lots in transport and better determine the efficacy of this practice under commercial conditions. 

C.A. Young is an MS and W.D. Gubler was Professor of Plant Pathology, Department of Plant Pathology, UC Davis; R.A. Choudhury is Assistant Professor, School of Earth, Environment, and Marine Science, University of Texas Rio Grande Valley; C.H. Crisosto is Full Extension Specialist in Cooperative Extension and Full Pomologist in the Agricultural Experimental Station (AES), Department of Plant Sciences, UC Davis.

## References

- Bates D, Mächler M, Bolker B, et al. 2014. Fitting linear mixed-effects models using lme4. *arXiv* 1406.5823.
- Briceno EX, Latorre BA. 2008. Characterization of *Cladosporium* rot in grapevines, a problem of growing importance in Chile. *Plant Dis* 92(12):1635–42. <https://doi.org/10.1094/pdis-92-12-1635>
- Briceno EX, Latorre BA, Bordeu E. 2009. Effect of *Cladosporium* rot on the composition and aromatic compounds of red wine. *Span J Agric Res* 7(1):119–28. <https://doi.org/10.5424/sjar/2009071-404>
- Cantin CM, Palou L, Bremer V, et al. 2011. Evaluation of the use of sulfur dioxide to reduce postharvest losses on dark and green figs. *Postharvest Biol Tec* 59(2):150–8. <https://dx.doi.org/10.1016/j.postharvbio.2010.09.016>
- [CDFA] California Department of Food and Agriculture. 2020. California Acreage Report 2019 Crop. CDFa, Sacramento, CA.
- Coertze S, Holz G, Sadie A. 2001. Germination and establishment of infection on grape berries by single airborne conidia of *Botrytis cinerea*. *Plant Dis* 85(6):668–77. <https://doi.org/10.1094/pdis.2001.85.6.668>
- Crisosto CH, Mitcham EJ. 2020. Table Grapes: Recommendations for Maintaining Postharvest Quality. [https://postharvest.ucdavis.edu/Commodity\\_Resources/Fact\\_Sheets/Datastores/Fruit\\_English/?uid=24&ds=798](https://postharvest.ucdavis.edu/Commodity_Resources/Fact_Sheets/Datastores/Fruit_English/?uid=24&ds=798) (accessed Apr. 5, 2020).
- Crisosto C, Mitchell F. 2002. Postharvest handling systems: Small fruits. I. Table grapes. *Postharvest Technology of Horticultural Crops* (3rd ed.). UC ANR Pub. 3311. Oakland, CA: UC ANR.
- Crisosto CH, Palou L, Garner D, et al. 2002. Concentration by time product and gas penetration after marine container fumigation of table grapes with reduced doses of sulfur dioxide. *HortTechnology* 12(2):241–5. <https://doi.org/10.21273/horttech.12.2.241>
- Crisosto CH, Smilanick JL. 2002. Table grapes. In *The Commercial Storage of Fruits, Vegetables, and Florist and Nursery Stocks*. Gross KC, Wang CY, Saltveit M (eds.). USDA Agriculture Handbook 66. USDA-ARS: Beltsville, MD.
- Crisosto CH, Smilanick JL, Dokoozlian NK, et al. 1994. Maintaining table grape post-harvest quality for long distant markets. *International Symposium on Table Grape Production*. Post-harvest quality. p 195–9.
- Crous PW, Braun U, Schubert K, et al. 2007. Delimiting *Cladosporium* from morphologically similar genera. *Stud Mycol* 58:33–56. <https://doi.org/10.3114/sim.2007.58.02>
- Dokoozlian N, Luvisi D, Moriyana M, et al. 1996. Influence of cultural practices in the berry size and composition of Redglobe table grapes. *University of California Cooperative Extension (UCCE)*. Pub. TB6-96.
- Dugan FM, Lupien SL, Grove GG. 2002. Incidence and competitive interactions of *Botrytis cinerea* and other filamentous fungi quiescent in grape berries and dormant buds in central Washington state. *Phytopathology* 92(6):S21–2. <https://doi.org/10.1046/j.1439-0434.2002.00774.x>
- Fernández-Trujillo J, Obando-Ulloa J, Baró R, et al. 2012. Quality of two table grape quard cultivars treated with single or dual-phase release SO<sub>2</sub> generators. *J Appl Bot Food Qual* 82(1):1–8.
- Fourie JF. 2008. Harvesting, handling and storage of table grapes (with focus on pre- and post-harvest pathological aspects). In *Proc International Symposium on Grape Production and Processing*. Adsule PG, Sawant IS, Shikhamany SD (eds.). Leuven 1, Belgium: Int Soc Horticultural Science. p 421–4.
- Harvey JM. 1955. A method of forecasting decay in California storage grapes. *Phytopathology* 45(4):229–32.
- Latorre BA, Briceno EX, Torres R. 2011. Increase in *Cladosporium* spp. populations and rot of wine grapes associated with leaf removal. *Crop Prot* 30(1):52–6. <https://doi.org/10.1016/j.cropro.2010.08.022>
- Lee J-S, Kaplunov T, Zutahy Y, et al. 2015. The significance of postharvest disinfection for prevention of internal decay of table grapes after storage. *Sci Hortic-Amsterdam* 192:346–9.
- Lee J-S, Kaplunov T, Zutahy Y, et al. 2015. The significance of postharvest disinfection for prevention of internal decay of table grapes after storage. *Sci Hortic-Amsterdam* 192:346–9. <https://doi.org/10.1016/j.scienta.2015.06.026>
- Luvisi DA, Shorey H, Smilanick JL, et al. 1992. Sulfur dioxide fumigation of table grapes. UC ANR Pub. 1932. Oakland, CA: UC ANR.
- Palou L, Crisosto CH, Garner D, et al. 2001. Minimum effective concentration of continuously supplied SO<sub>2</sub> to control *Botrytis* decay of cold-stored table grapes. *Phytopathology* 91(6 Supplement):S69. Publication no. P-2001-0501-AMA.
- Palou L, Crisosto CH, Garner D, et al. 2002. Minimum constant sulfur dioxide emission rates to control gray mold of cold-stored table grapes. *Am J Enol Viticult* 53(2):110–5.
- Pisani C, Nguyen TT, Gubler WD. 2015. A novel fungal fruiting structure formed by *Aspergillus niger* and *Aspergillus carbonarius* in grape berries. *Fungal Biol* 119(9):784–90. <https://doi.org/10.1016/j.funbio.2015.05.002>
- Rayner RW. 1970. *A Mycological Colour Chart*. Kew, Great Britain: Commonwealth Mycological Institute.
- Serey RA, Torres R, Latorre BA. 2007. Pre- and post-infection activity of new fungicides against *Botrytis cinerea* and other fungi causing decay of table grapes. *Cienc Invest Agrar* 34(3):215–24. <https://doi.org/10.4067/s0718-16202007000300005>
- Smilanick J, Henson D. 1992. Minimum gaseous sulphur dioxide concentrations and exposure periods to control *Botrytis cinerea*. *Crop Prot* 11(6):535–40. [https://doi.org/10.1016/0261-2194\(92\)90171-z](https://doi.org/10.1016/0261-2194(92)90171-z)
- Smits TH, Wick LY, Harms H, et al. 2003. Characterization of the surface hydrophobicity of filamentous fungi. *Environ Microbiol* 5(2):85–91. <https://doi.org/10.1046/j.1462-2920.2003.00389.x>
- Swett CL, Bourret T, Gubler WD. 2016. Characterizing the brown spot pathosystem in late-harvest table grapes (*Vitis vinifera* L.) in the California Central Valley. *Plant Dis* 100(11):2204–10. <https://doi.org/10.1094/pdis-11-15-1343-re>
- Swett CL, Young CA, Gubler WD. 2014. Latent infection biology of *Cladosporium* species associated with brown spot, a post-harvest disease of late harvest table grapes in California. *Phytopathology* 104(11):116.
- Teles CS, Benedetti BC, Gubler WD, et al. 2014. Prestorage application of high carbon dioxide combined with controlled atmosphere storage as a dual approach to control *Botrytis cinerea* in organic 'Flame Seedless' and 'Crimson Seedless' table grapes. *Postharvest Biol Tec* 89:32–9. <https://doi.org/10.1016/j.postharvbio.2013.11.001>